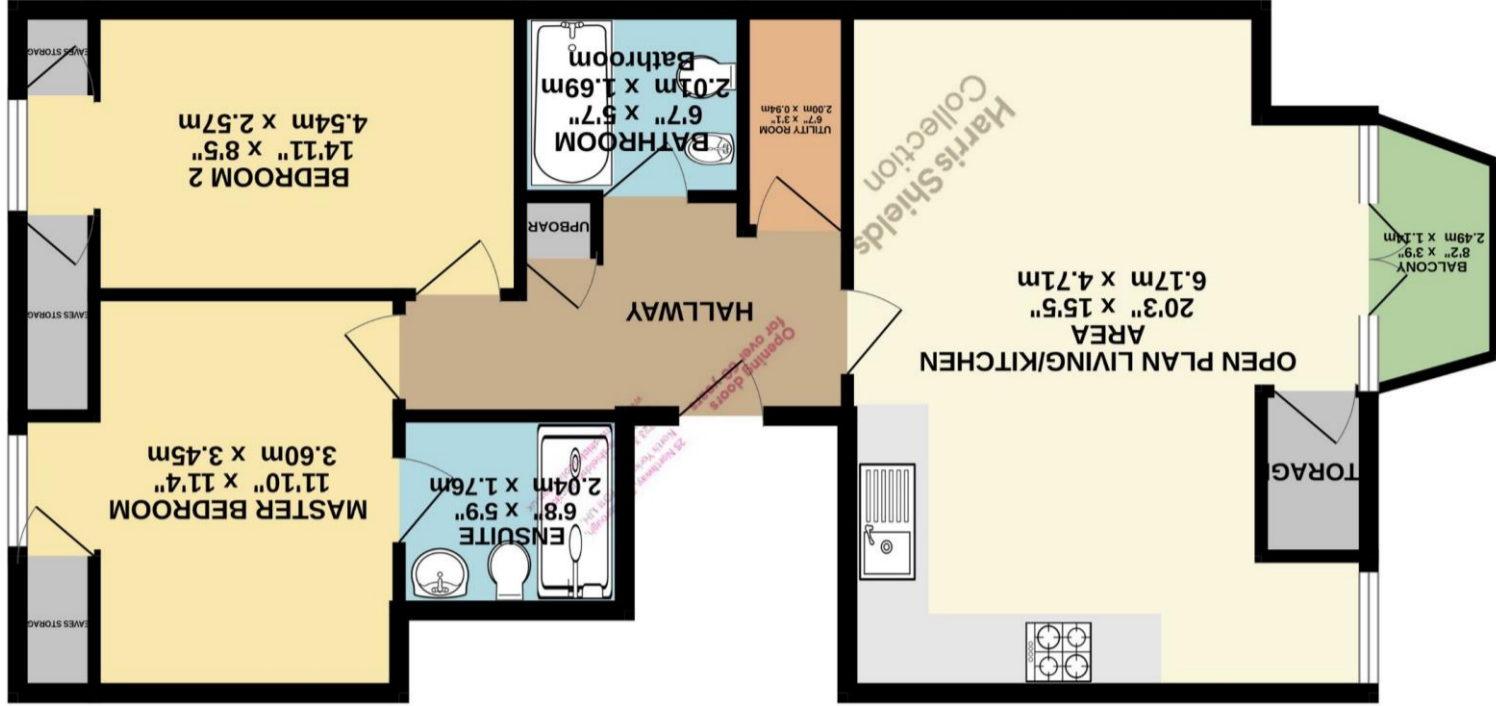


Whilst every attempt has been made to ensure the accuracy of the floorplan contained here, measurements of doors, windows, rooms and any other items are approximate and no responsibility is taken for any error, omissions or mis-statement. This plan is for illustrative purposes only and should be used as such by any prospective purchaser. The services, systems and appliances shown have not been tested and no guarantee as to their operability or efficiency can be given.  
 Made with Metropix ©2024



TOP FLOOR  
 730 sq.ft. (67.9 sq.m.) approx.



Apartment 20, Olivers View, 28 Prince of Wales Terrace, Scarborough, YO11 2AN

Harris Shields Collection

## A two bedroom, two bathroom penthouse apartment.

- ✓ Penthouse Apartment
- ✓ Two Bedrooms
- ✓ Two Bathrooms ( master en-suite)
- ✓ Balcony With Sea Views
- ✓ No Onward Chain
- ✓ Lift In Building
- ✓ Leasehold 233 Years Remaining
- ✓ Council Tax Band C

Asking Price £137,500

# Harris Shields Collection

Harris Shields Collection, 25 Northway, Scarborough North Yorkshire, YO11 1JH

01723 341557

[mail@harris-shieldscollection.uk](mailto:mail@harris-shieldscollection.uk)

<https://harris-shieldscollection.uk/>

### Description

Offered with no onward chain is this delightful two bedroom, two bathroom penthouse apartment with a balcony offering sea views in this modern purpose built development in the much sought after South Cliff area of Scarborough. The accommodation comprises; communal entrance door to ground floor, security intercom with communal hallway to lift to top floor, entrance door to hallway. Open plan living kitchen area with fully fitted kitchen to include, hob, extractor, oven, grill, dishwasher fridge and freezer. Iso a balcony and eaves storage. Utility cupboard with washing machine, master bedroom with en-suite with underfloor heating. Bedroom two, bathroom also with underfloor heating. This is a leasehold flat with 233 years. Service charge of £883.40 per annum and ground rent of £120.00 per annum. Holiday lets and pets are not permitted however assured shorthold tenancies are permitted. Scarborough Borough Council tax band C.

### Additional Information

Council tax band



Opening doors  
for over 60 years

Harris Shields  
Collection